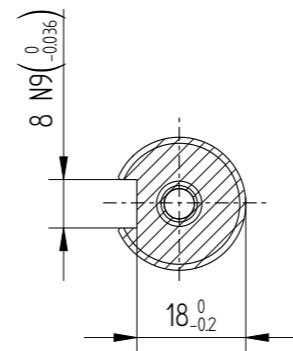
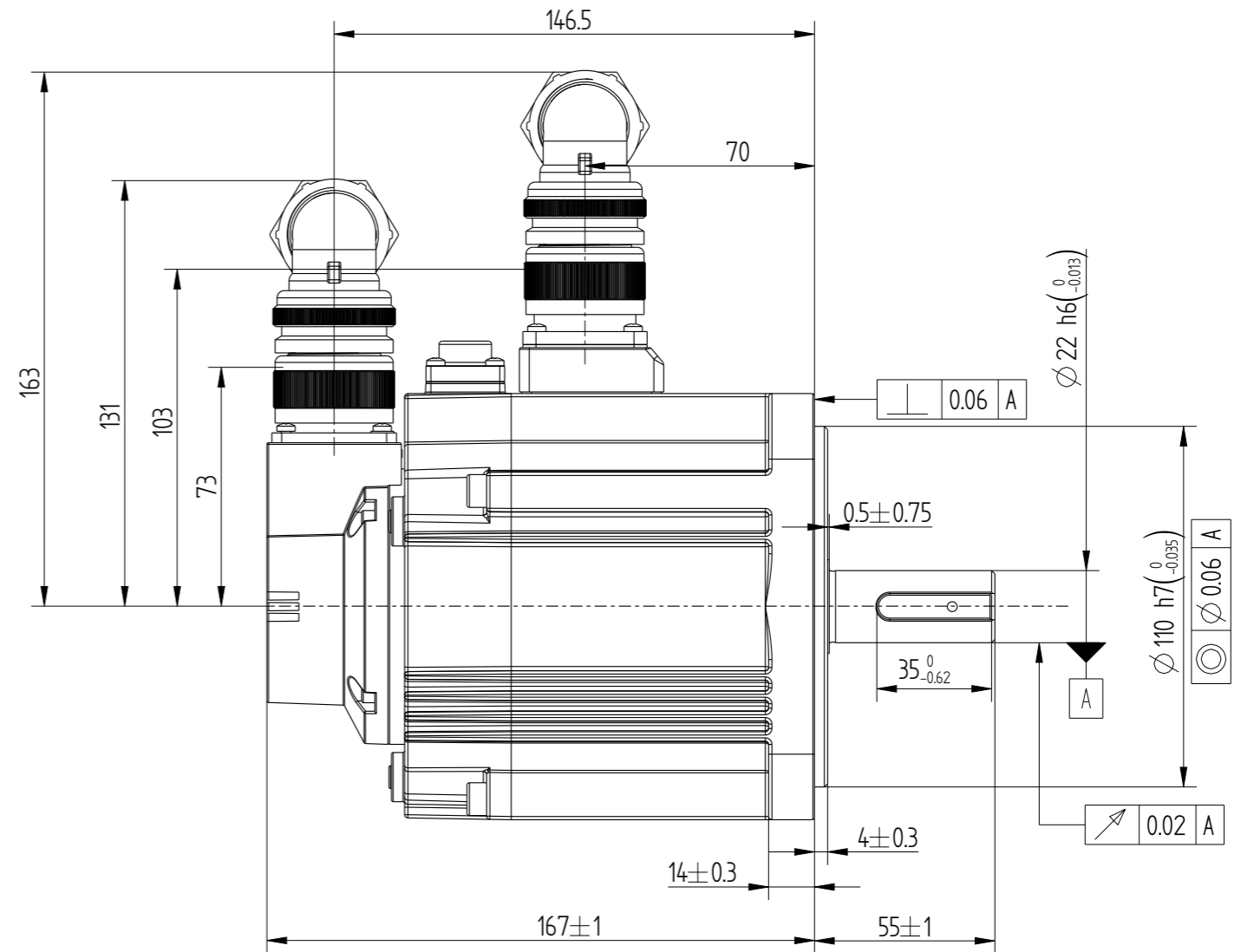
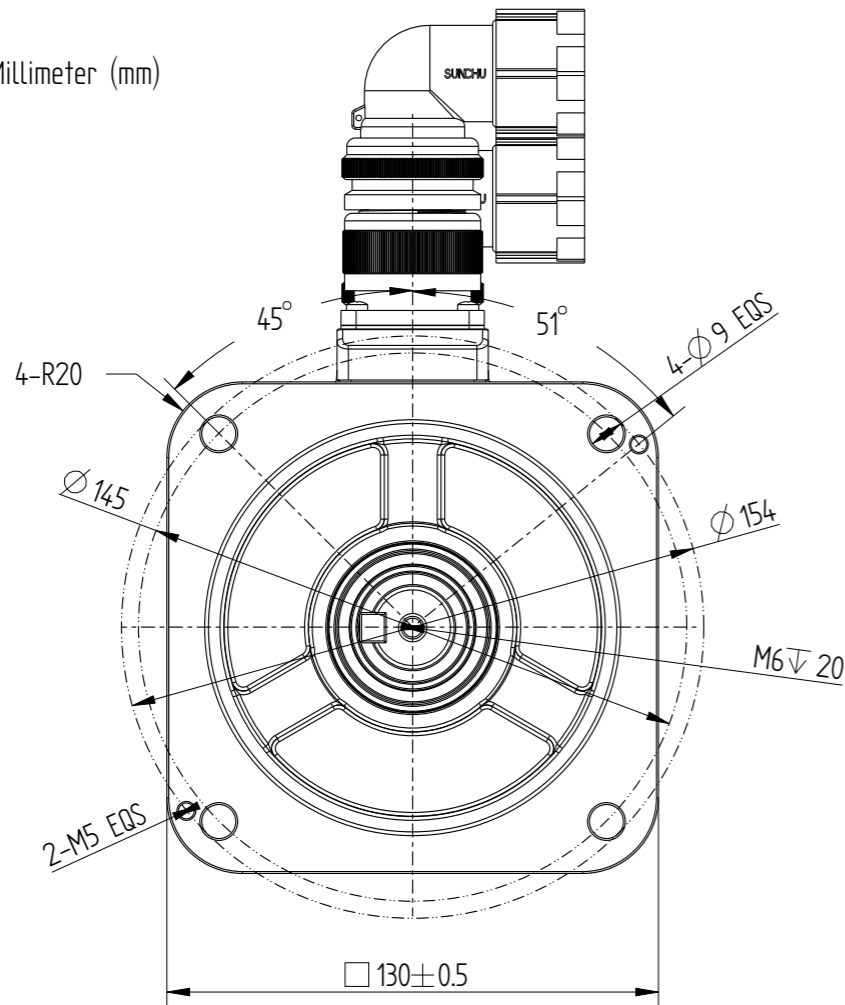
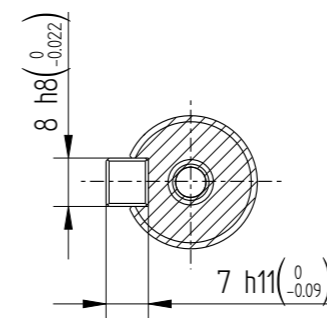


Amendment	Description

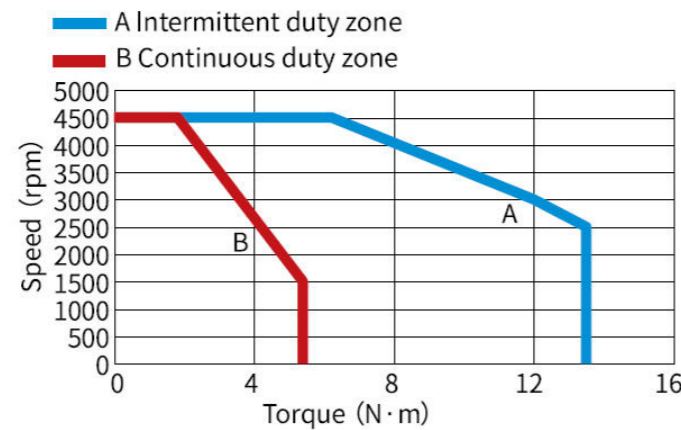
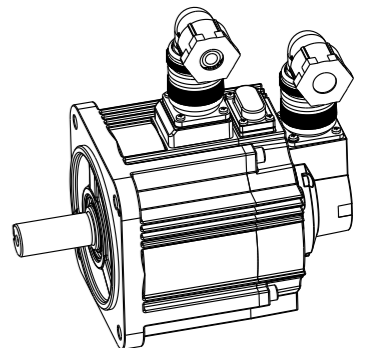
Unit: Millimeter (mm)



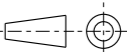
Dimension of shaft end



Dimension of shaft end with key



Basic function patmeters	
Rated power kW	0.85
Rated voltage V	380
Rated current A	3.5
Peak current at rated speed A	8.5
Rated torque Nm	5.39
Peak torque at rated speed Nm	13.5
Rated speed rpm	1500
Max speed rpm	4500
Rotor inertia kg*cm ²	15.8±10%
Encoder resolution	23bit
Insulation class	F(155)
Protection level	IP67
Static torque of brake Nm	≥16
Brake power supply V	DC24±10%
Brake backlash°	≤1
Duty cycle	S1
Radial load N	≤686
Axial load N	≤196

				Motor outline Drawing			01118008-WX	
B02	Replace	/	/					
Version	Change method	Changed by	Date					
Design	/							
Check	/			/			Mark 	INOVANCE
Craft	/							
Verify	/							
stangardization	/			Weight	Scale	Version	Page 1 of 1	
Approve	/			7.7kg	12	B02	Model	MS1H3-85B15□-A334R-INT